

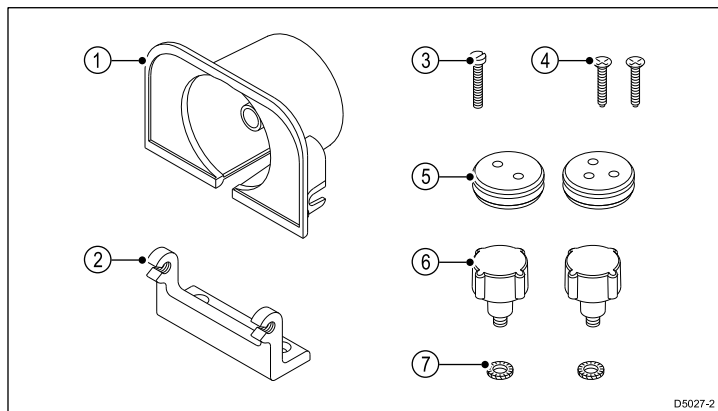
i40 Desktop mounting bracket

Mounting bracket introduction

The desktop mounting bracket provides an alternative method of mounting an i40 instrument display, for example, in a location where panel mounting is impractical.

Note: This desktop mounting bracket can also be used on the ST40 instrument range.

Parts supplied



1	1 x Instrument cover
2	1 x Trunnion mount
3	1 x M4 Pan head screw
4	2 x No.8 Countersunk screws
5	2 x Grommets
6	2 x Knobs
7	2 x M6 Lock washers

Unpack your desktop mounting bracket and check that the items listed above are present.

Mounting

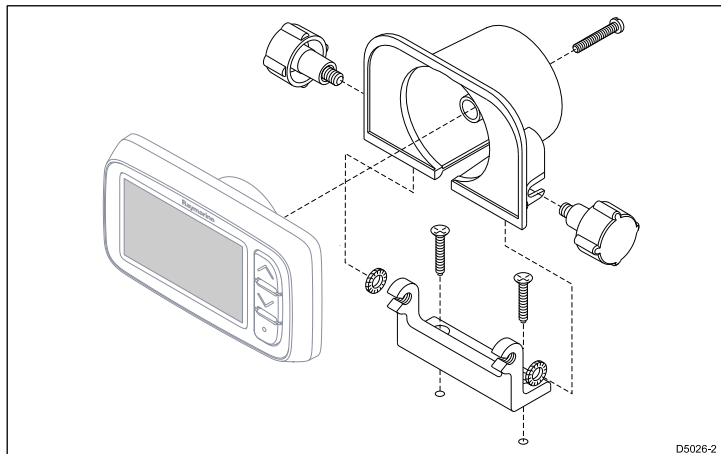
You can fit your desktop mounting bracket either as a pedestal mount on a suitable flat surface, or suspend from an overhead position.



Warning: Concealed wiring / pipes

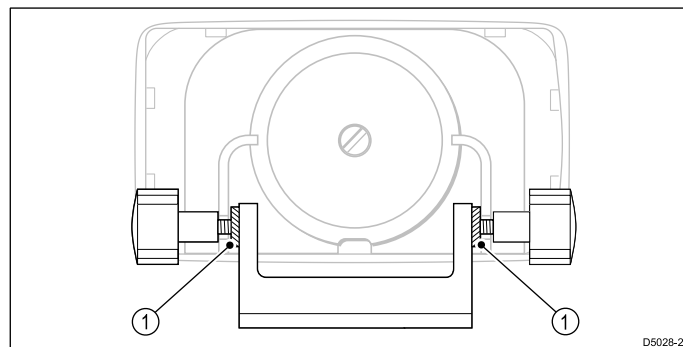
Ensure that there are no hazards such as electrical wiring, pipes etc., concealed behind the mounting surface which could be damaged either by drilling or by the trunnion mount fixing screws protruding through the surface.

Mounting your desktop mounting bracket



1. Hold the trunnion mount in place against the mounting surface and mark the positions for the screw holes.
2. Using a suitable sized drill bit, drill pilot holes for the securing screws.

Drill only into the mounting surface, to ensure that items behind the mounting surface are not damaged.
3. Using the countersunk screws (provided), screw the trunnion mount to the mounting surface.
4. Place the rear of the unit into the instrument cover, with connecting cables routed through the cable channel in the cover.
5. Secure the cover and unit together with the central pan head screw (provided).
6. Place the assembled unit and cover in position at the trunnion mount and fit the 2 knobs and lock washers, arranged as detailed below:



1

Lock washer locations

7. Adjust the viewing angle of the unit as required, then tighten the knobs to secure.
8. Use either or both the grommets supplied if you need to route cables from the unit through adjacent surfaces.